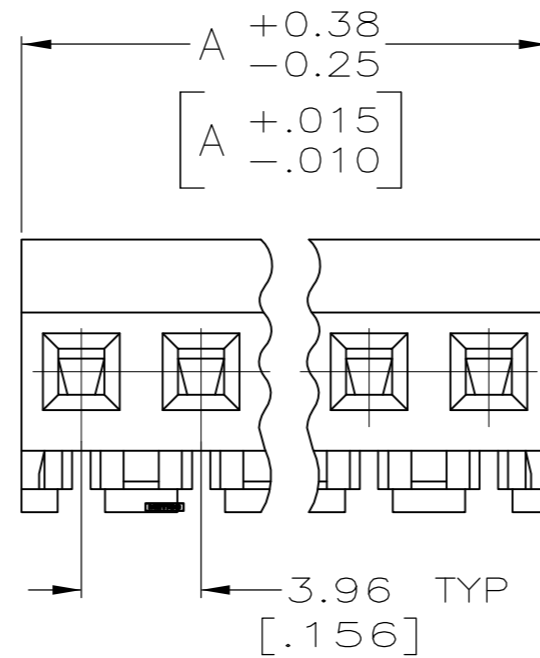
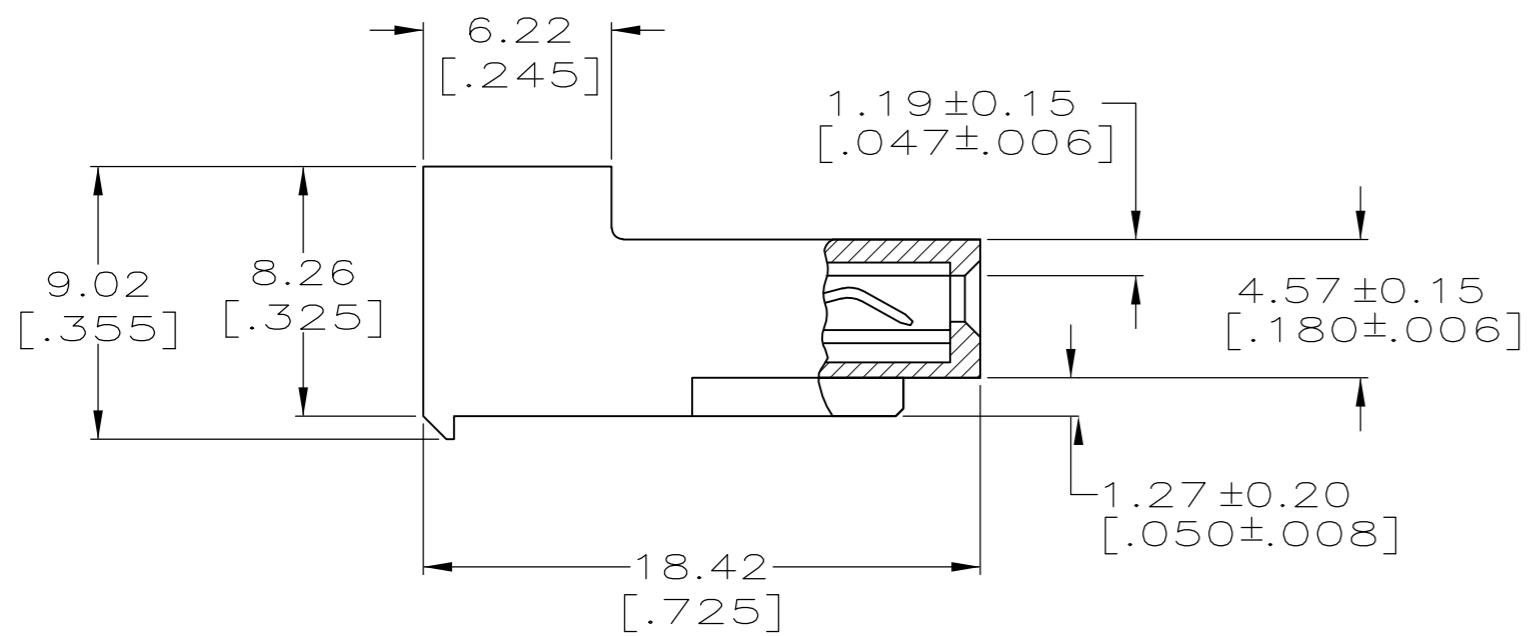
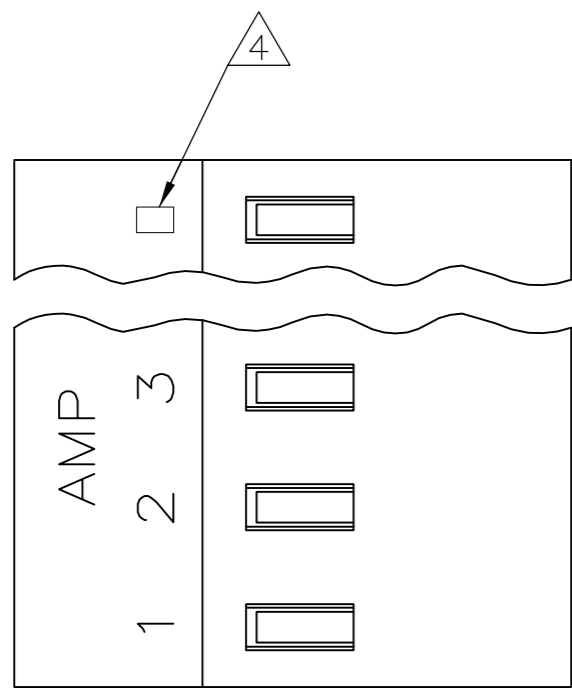


THIS DRAWING IS UNPUBLISHED. RELEASED FOR PUBLICATION  
 © COPYRIGHT BY TYCO ELECTRONICS CORPORATION. ALL RIGHTS RESERVED.

LOC		DIST		REVISIONS			
P	LTR	DESCRIPTION		DATE	DWN	APVD	
CM	0	H	ECO-07-012886	22JUN07	KW	DB	



1 MATERIAL:  
 CONNECTOR - NYLON UL94V-2 (WHITE).  
 CONTACTS - 0.30[.012] THICK COPPER ALLOY.  
 PLATING - 0.00038[.000015] GOLD IN CONTACT AREA.  
 0.00203[.000080] MIN THICKNESS BRIGHT  
 TIN-LEAD IN SLOT AREA FOR 641156-2  
 THRU 2-641156-4 OR MATTE WHISKER  
 MITIGATED TIN IN SLOT AREA FOR  
 3-641156-2 THRU 5-641156-4 OVER  
 NICKEL UNDERPLATE.

- 2. CONTACTS ACCEPT 24 AWG WIRE WITH 2.41[.095] MAX INSULATION DIAMETER.
- 3. CONTACTS MUST ACCEPT 1.14±0.03[.045±.001] SQUARE POST AND REMAIN LOCKED IN POSITION.
- 4. IDENTIFICATION NUMBER FOR LAST CIRCUIT MAY NOT APPEAR ON ALL ASSEMBLIES.
- 5. DIMENSIONS IN BRACKETS ARE IN INCHES.
- 6. HOUSING FEATURES ARE: CLOSED END WITHOUT LOCKING RAMP.

NOTE DELETED.  
 NOTE DELETED.

CONTACT FINISH	DIM A	NO. OF CIRCUITS	PART NO.
TIN	95.10 [3.744]	24	5-641156-4
	91.14 [3.588]	23	5-641156-3
	87.17 [3.432]	22	5-641156-2
	83.21 [3.276]	21	5-641156-1
	79.25 [3.120]	20	5-641156-0
	75.29 [2.964]	19	4-641156-9
	71.32 [2.808]	18	4-641156-8
	67.36 [2.652]	17	4-641156-7
	63.40 [2.496]	16	4-641156-6
	59.44 [2.340]	15	4-641156-5
	55.47 [2.184]	14	4-641156-4
	51.51 [2.028]	13	4-641156-3
	47.55 [1.872]	12	4-641156-2
	43.59 [1.716]	11	4-641156-1
	39.62 [1.560]	10	4-641156-0
	35.66 [1.404]	9	3-641156-9
	31.70 [1.248]	8	3-641156-8
	27.74 [1.092]	7	3-641156-7
	23.77 [.936]	6	3-641156-6
	19.81 [.780]	5	3-641156-5
	15.85 [.624]	4	3-641156-4
	11.89 [.468]	3	3-641156-3
	7.92 [.312]	2	3-641156-2
	TIN-LEAD	95.10 [3.744]	24
91.14 [3.588]		23	2-641156-3
87.17 [3.432]		22	2-641156-2
83.21 [3.276]		21	2-641156-1
79.25 [3.120]		20	2-641156-0
75.29 [2.964]		19	1-641156-9
71.32 [2.808]		18	1-641156-8
67.36 [2.652]		17	1-641156-7
63.40 [2.496]		16	1-641156-6
59.44 [2.340]		15	1-641156-5
55.47 [2.184]		14	1-641156-4
51.51 [2.028]		13	1-641156-3
47.55 [1.872]		12	1-641156-2
43.59 [1.716]		11	1-641156-1
39.62 [1.560]		10	1-641156-0
35.66 [1.404]		9	641156-9
31.70 [1.248]		8	641156-8
27.74 [1.092]		7	641156-7
23.77 [.936]		6	641156-6
19.81 [.780]		5	641156-5
15.85 [.624]		4	641156-4
11.89 [.468]		3	641156-3
7.92 [.312]		2	641156-2

METRIC

THIS DRAWING IS A CONTROLLED DOCUMENT. DWN B. LEWIS 3-11-96  
 CHK R. SWING 3-11-96  
 APVD -  
 Tyco Electronics Tyco Electronics Corporation Harrisburg, Pa 17105-3608  
 NAME MTA-156 CONNECTOR ASSEMBLY, 24 AWG, STANDARD  
 PRODUCT SPEC 108-1051  
 APPLICATION SPEC 114-1020  
 MATERIAL -  
 FINISH -  
 WEIGHT -  
 CUSTOMER DRAWING  
 SIZE A2 CAGE CODE 00779 DRAWING NO C=641156 RESTRICTED TO -  
 SCALE 4:1 SHEET 1 OF 1 REV H